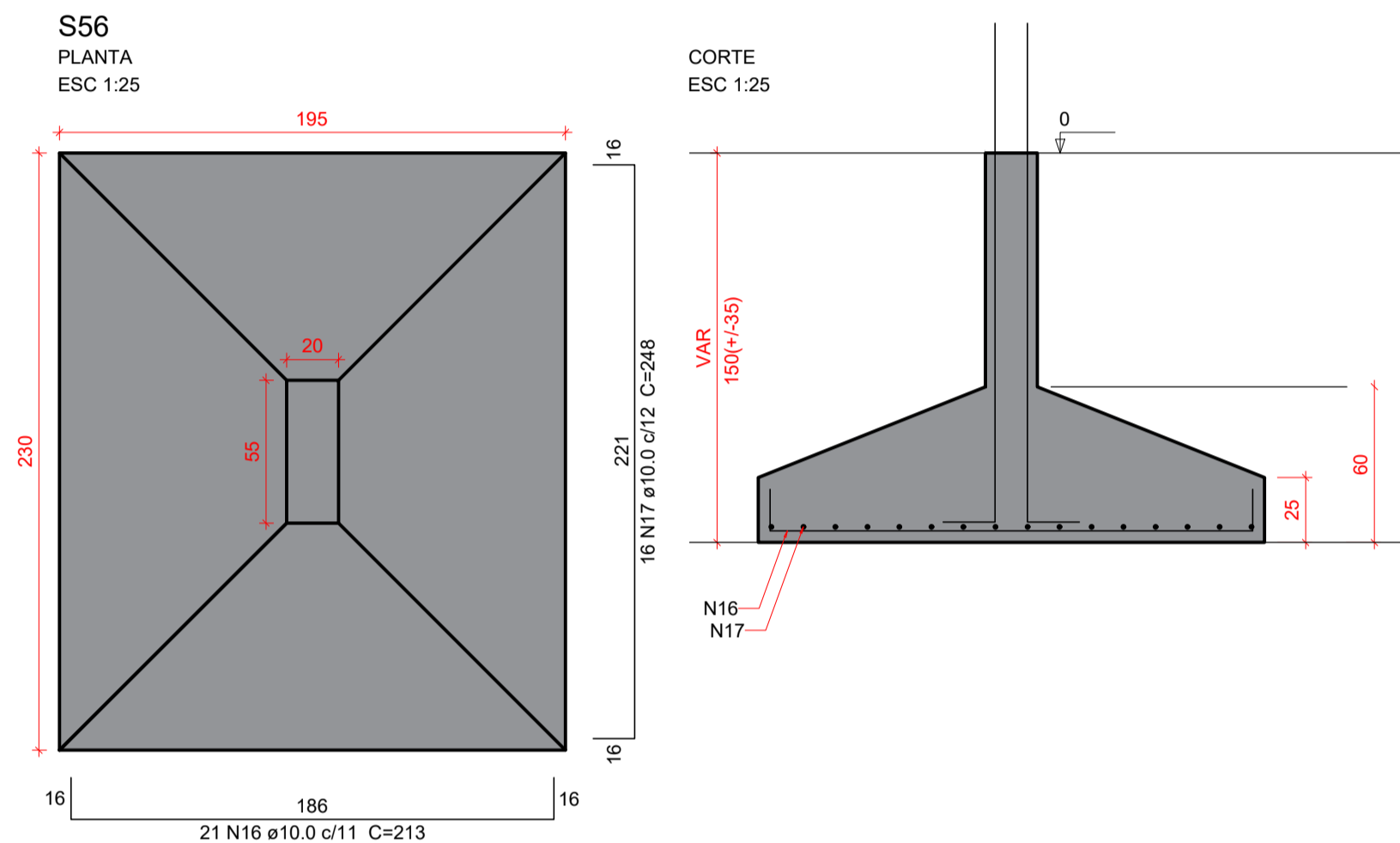
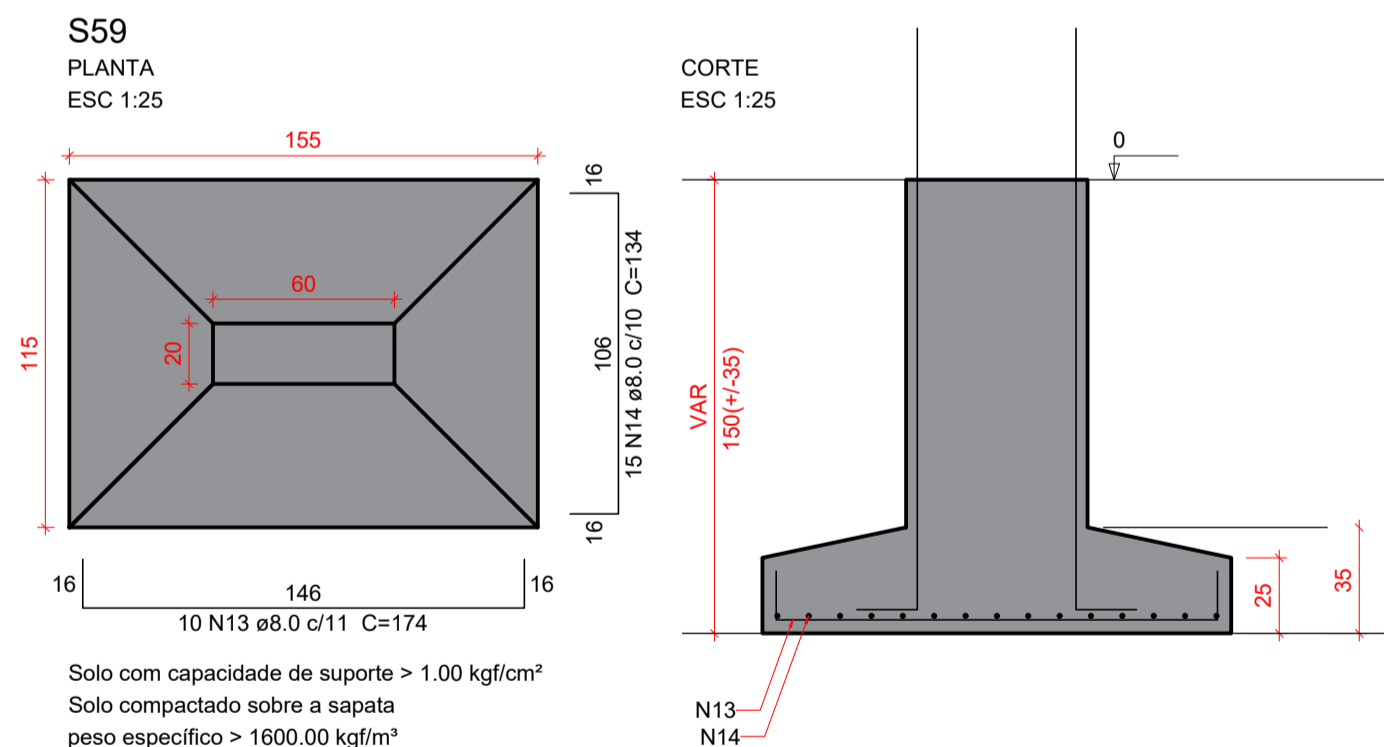


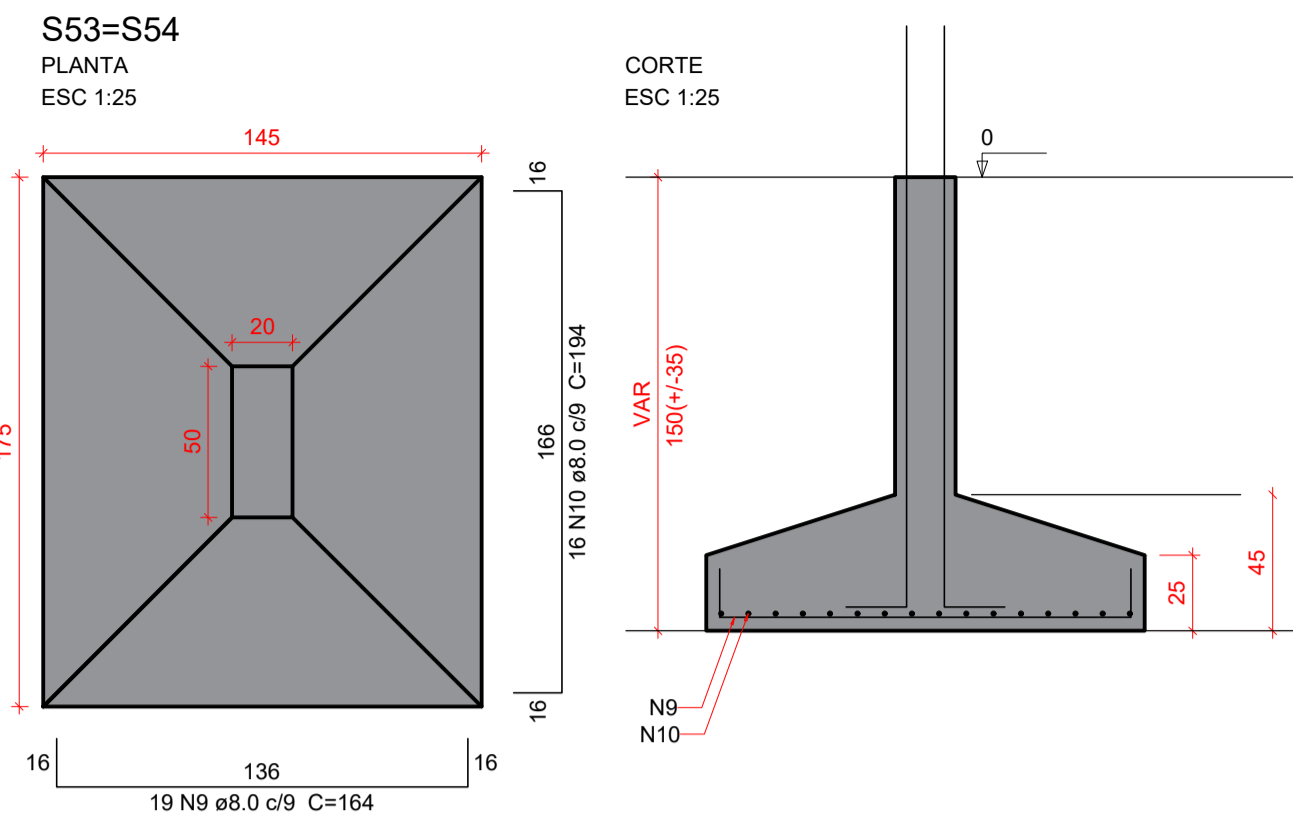
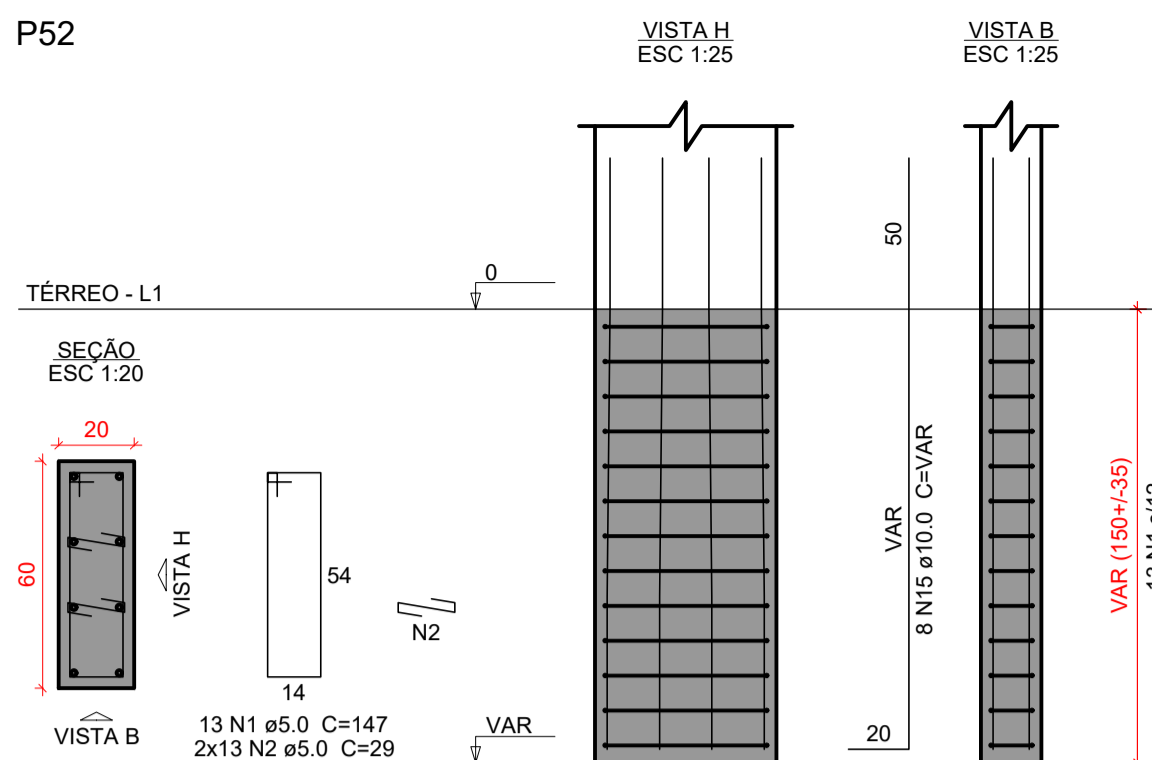
Solo com capacidade de suporte  $> 1.00 \text{ kgf/cm}^2$   
Solo compactado sobre a sapata  
peso específico  $> 1600.00 \text{ kg/m}^3$



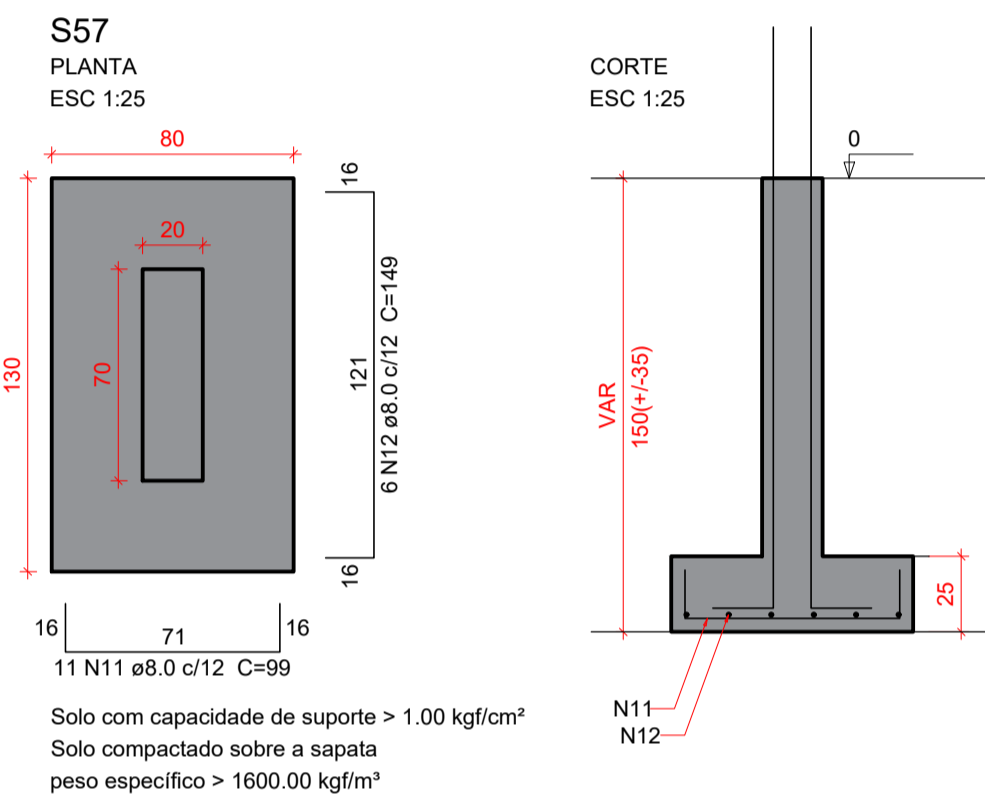
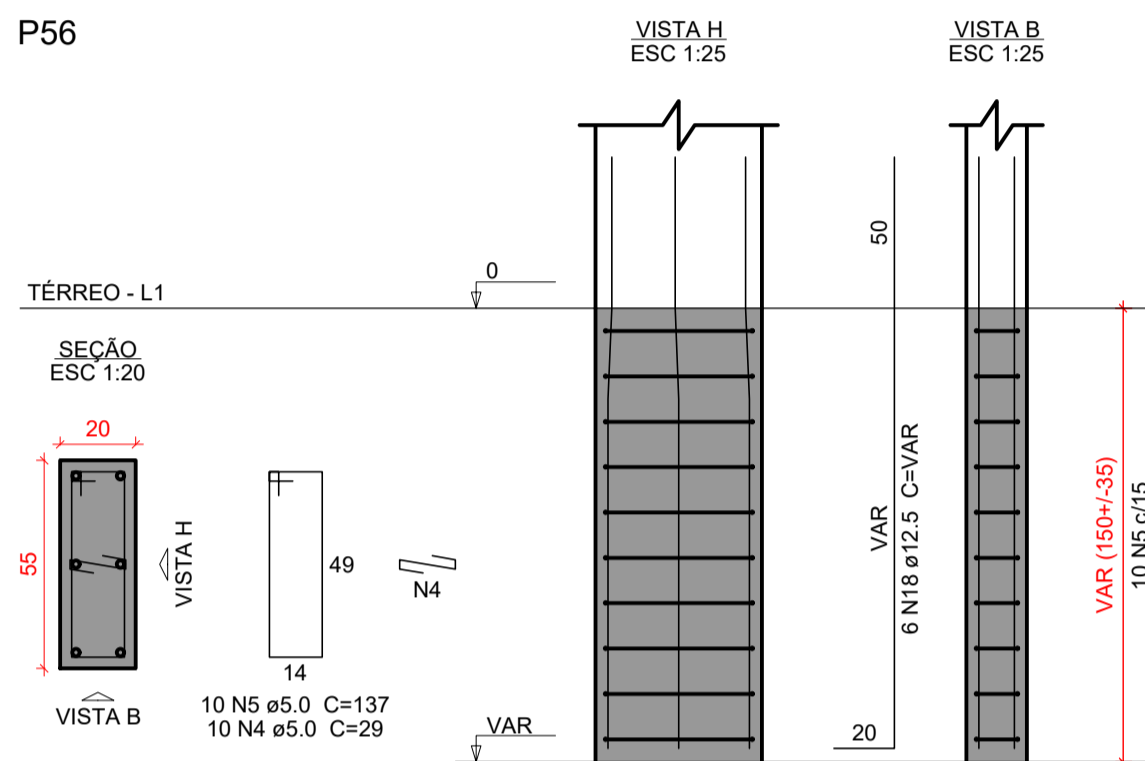
Solo com capacidade de suporte  $> 1.00 \text{ kgf/cm}^2$   
Solo compactado sobre a sapata  
peso específico  $> 1600.00 \text{ kgf/m}^3$



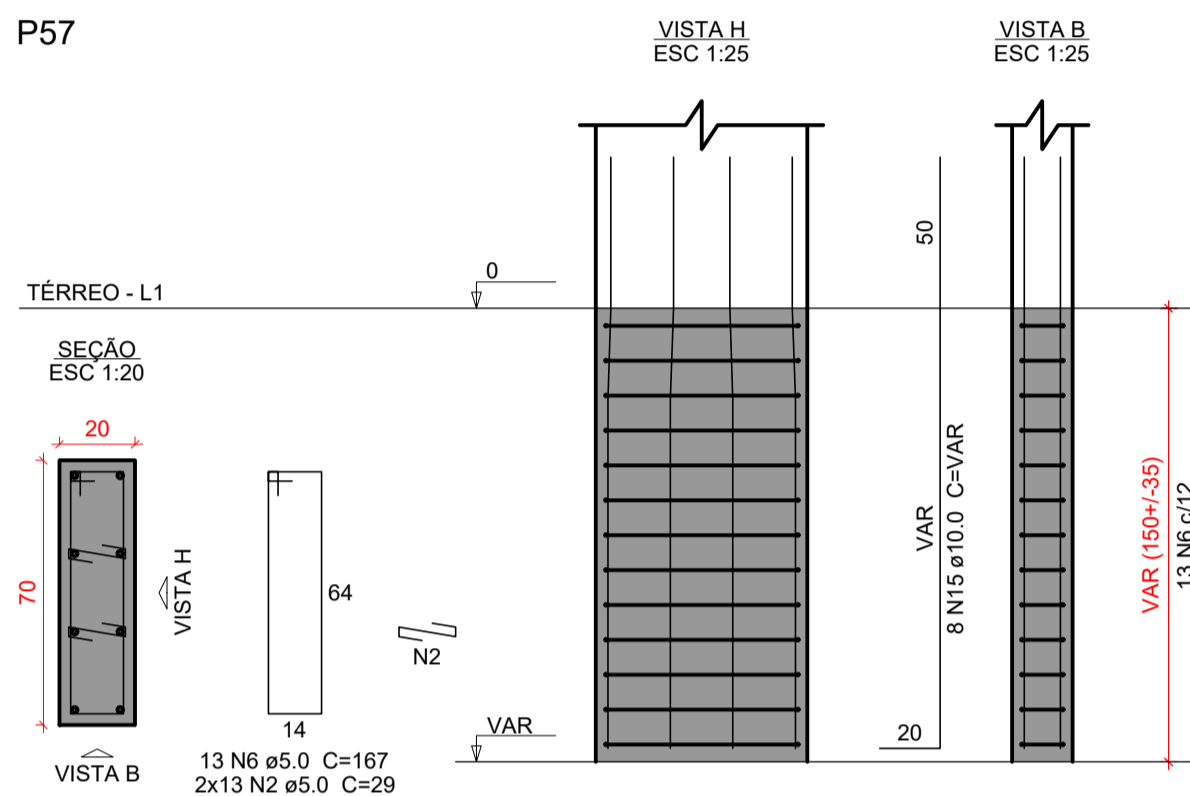
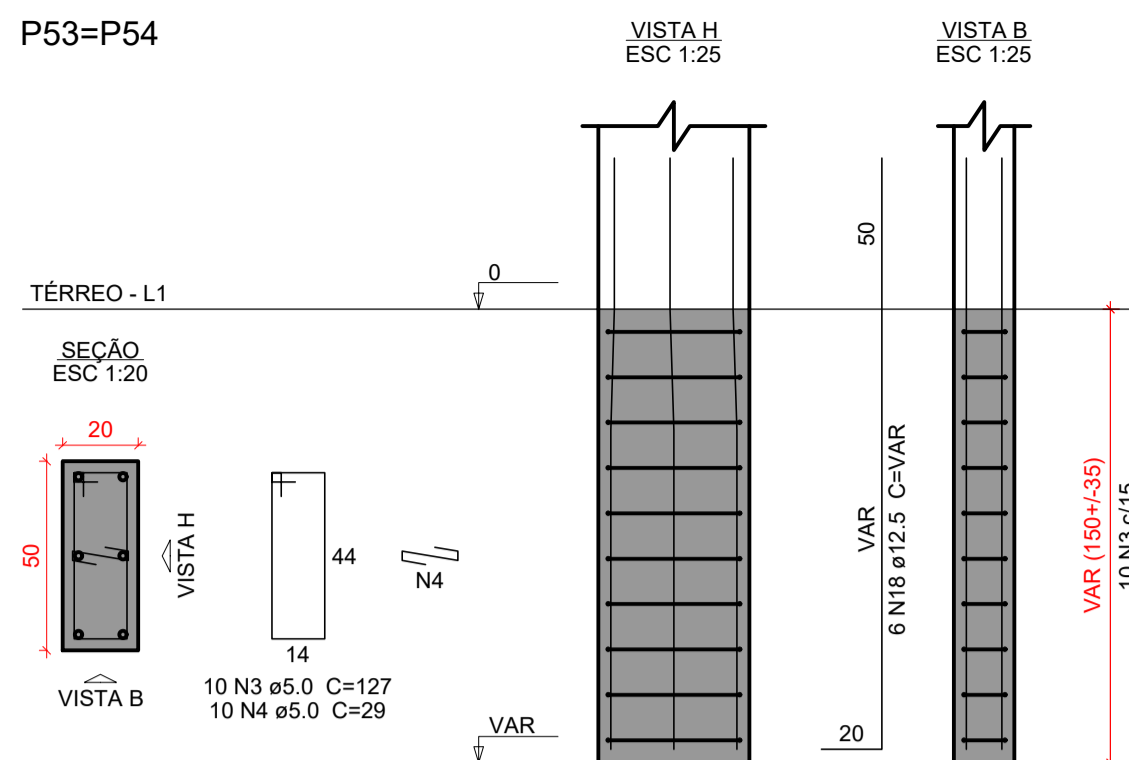
Solo com capacidade de suporte  $> 1.00 \text{ kgf/cm}^2$   
Solo compactado sobre a sapata  
peso específico  $> 1600.00 \text{ kgf/m}^3$



Solo com capacidade de suporte  $> 1.00 \text{ kgf/cm}^2$   
Solo compactado sobre a sapata  
peso específico  $> 1600.00 \text{ kgf/m}^3$



Solo com capacidade de suporte  $> 1.00 \text{ kgf/cm}^2$   
Solo compactado sobre a sapata  
peso específico  $> 1600.00 \text{ kgf/m}^3$



Relação do aço					
S52	2xS53		S56		
S57	S59				
AÇO	N	DIAM (mm)	QUANT	C.UNIT (cm)	C.TOTAL (cm)
CA60	1	5,0	26	147	3822
	2	5,0	78	29	2262
	3	5,0	20	127	2540
	4	5,0	30	29	870
	5	5,0	10	137	1370
CA50	6	5,0	13	167	2171
	7	8,0	19	159	3021
	8	8,0	14	199	2786
	9	8,0	38	164	6232
	10	8,0	32	194	6208
	11	11,0	11	90	1089
	12	8,0	6	149	894
	13	8,0	10	174	1740
	14	8,0	15	134	2010
	15	10,0	24	VAR	VAR
	16	10,0	21	23	4473
	17	10,0	16	248	3968
	18	12,5	18	VAR	VAR

AÇO	DIAM (mm)	C.TOTAL (m)	PESO + 10 % (kg)
CA50	8.0	239.8	104.1
	10.0	135.8	92.1
	12.5	38.4	40.6
CA60	5.0	130.4	22.1
PESO TOTAL (kg)			
CA50	236.8		
CA60	22.1		

Volume de concreto (C-30) = 5.75 m<sup>3</sup>  
Área de forma = 19.46 m<sup>2</sup>

DOCUMENTOS DE REFERÊNCIAS:

NOTAS:

TODAS AS MEDIDAS ESTÃO EM METRO.

LEGENDA:

REV. 00	22/11/2024	EMISSÃO INICIAL	LUÍSA TRISTÃO	LÚDIA MARTINS
Nº	DATA	REVISÃO	DES.	RESP.

[illegible]